

# Online Community Consultation



## Proposed Scheme:

Mixed Tenure Housing Development at Whiterock Road, Newhill, Belfast

## Location:

Lands immediately North East of 261 Whiterock Road, Newhill, Belfast (First Steps Nursery)

## Mix:

8no. 5 person 3 bed Detached Affordable Homes

12no. 3 person 2 bed Semi Detached Social Homes

9no. 5 person 3 bed Detached Social Homes

## Introduction:

Radius Housing representatives conducted a leaflet drop in the area **week commencing 02 November 2020**. In light of COVID19 restrictions, we are unable to hold our normal face to face public consultation and have therefore adopted a new approach, by inviting the local residents to participate in the community consultation by way of email. We would welcome any comments by email by **30 November 2020**.

## About Radius Housing:

Radius provides housing, care and support to over 33,000 homes. We are a social enterprise employing over 1,000 people and managing 12,500 properties in 80 towns across Northern Ireland.

Radius has a social housing presence in all 11 council areas, serviced by a regional office networking spanning Belfast, Holywood, Ballymena, Newry and Londonderry.

Radius Housing was established in 2017 following merger (Helm & Fold) and draws on over 80 years' combined experience to make a positive impact on housing and communities into the future.

## The Proposed Plans:

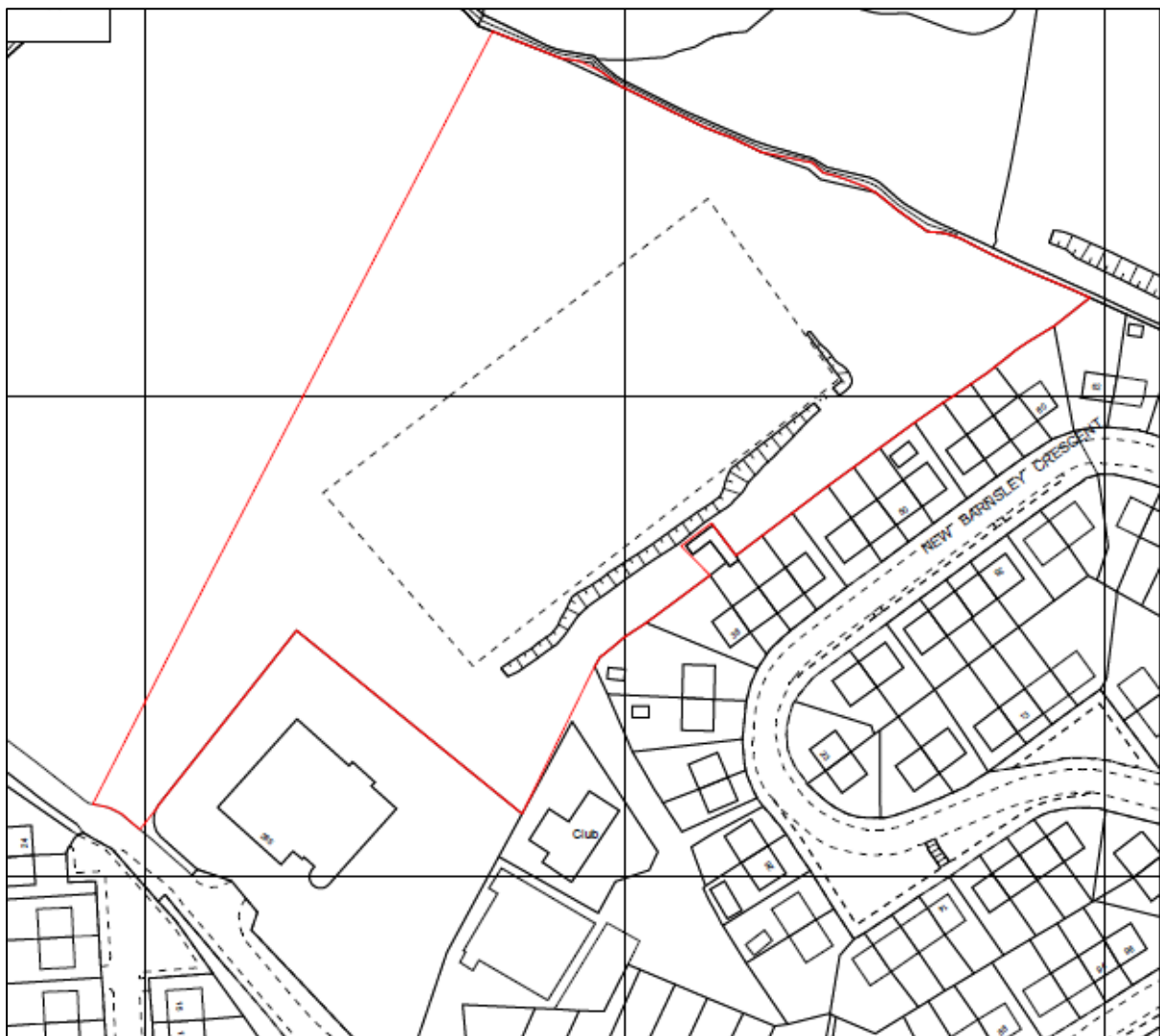
After engaging with Belfast City Council's planning department, Radius have arrived at a suitable layout of 29no. units at this location. The intended mix is to develop 21no social homes and 8no. affordable homes for private purchase in the open market.

After previous engagement with stakeholders on the site, Radius would be delighted to invite neighbouring residents to comment on the scheme on the proposed development of a mixed tenured scheme at this location.

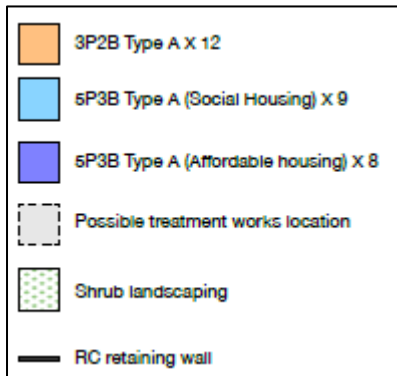
After community consultation, Radius intend to complete feasibility work on the scheme, address any genuine concerns from participants, with the hope of submitting a planning application for the proposal within this financial year to be processed by Belfast City Council.

Please see below the current proposal.

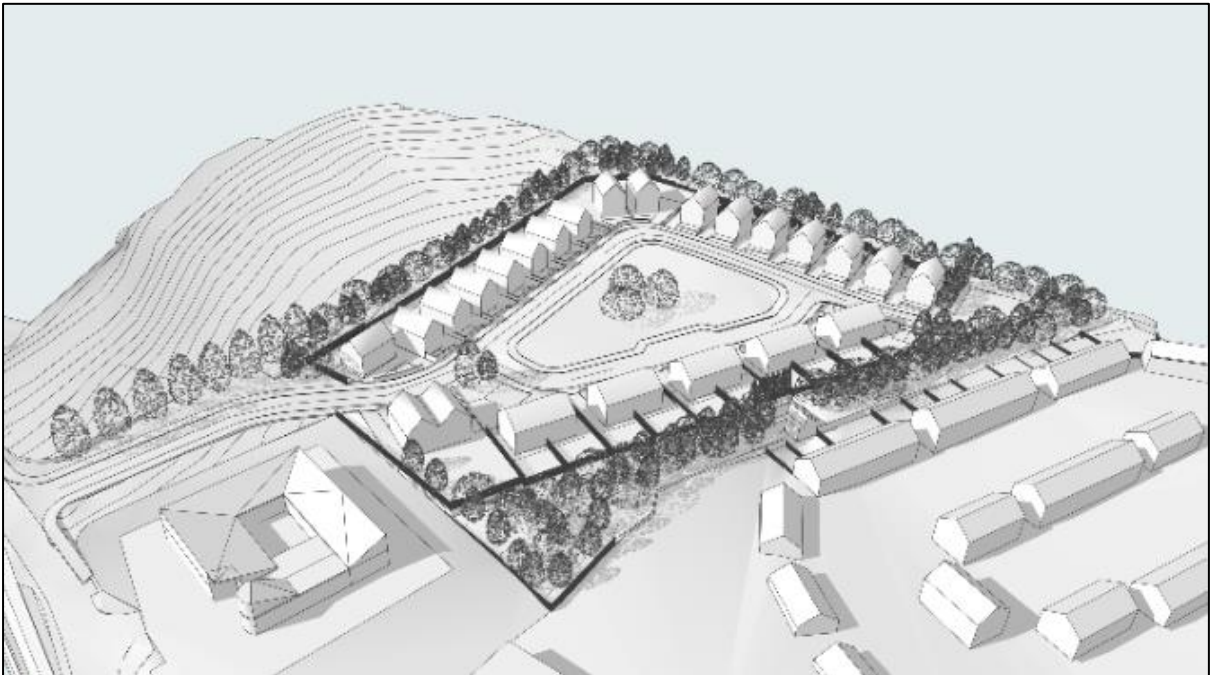
### Site Location



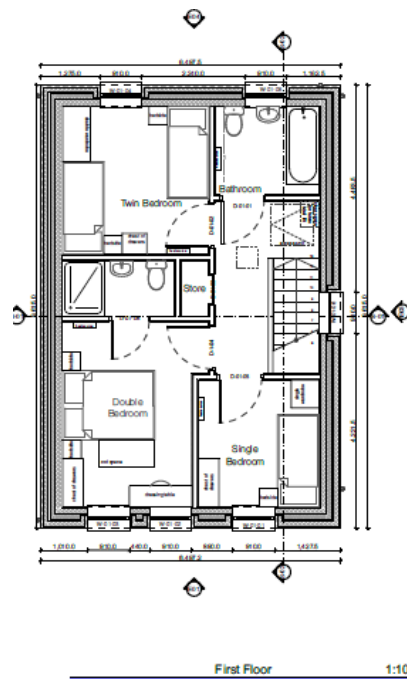
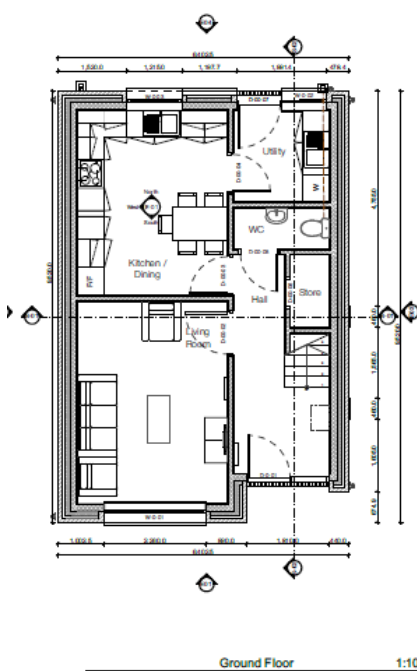
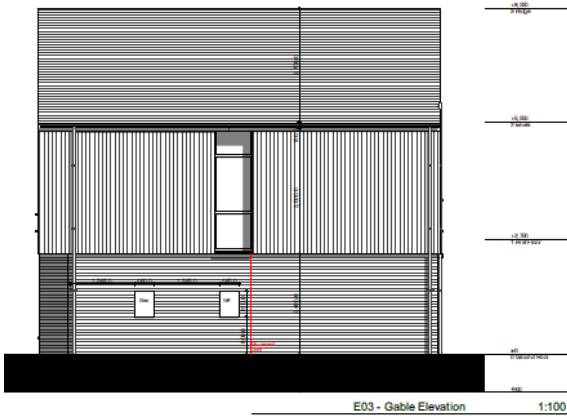
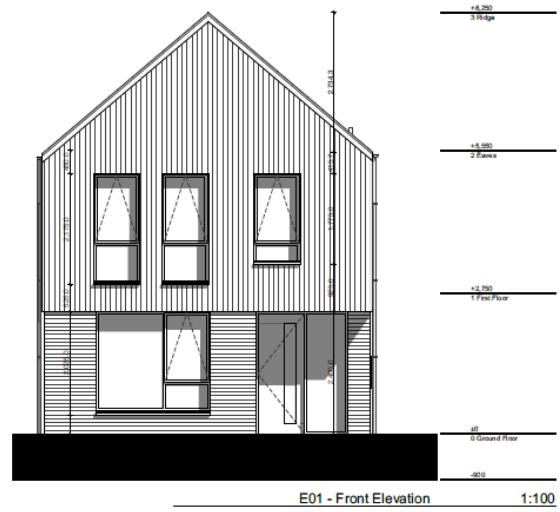
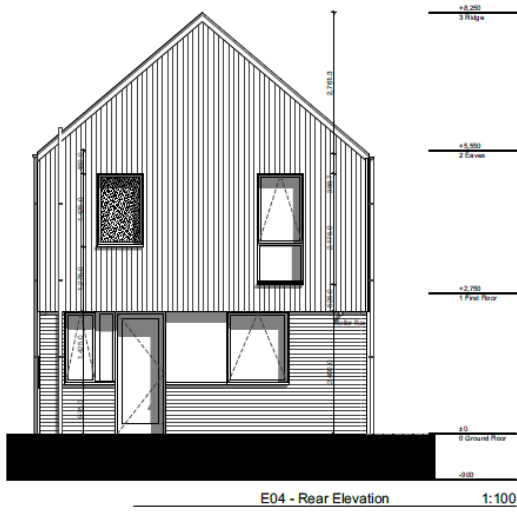
# SITE LAYOUT



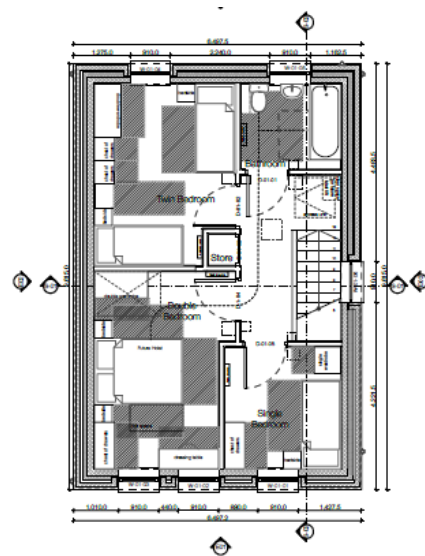
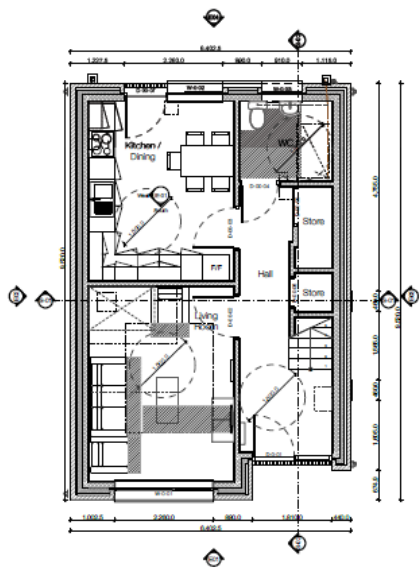
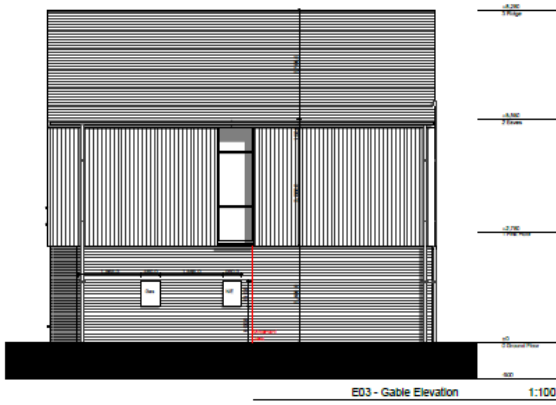
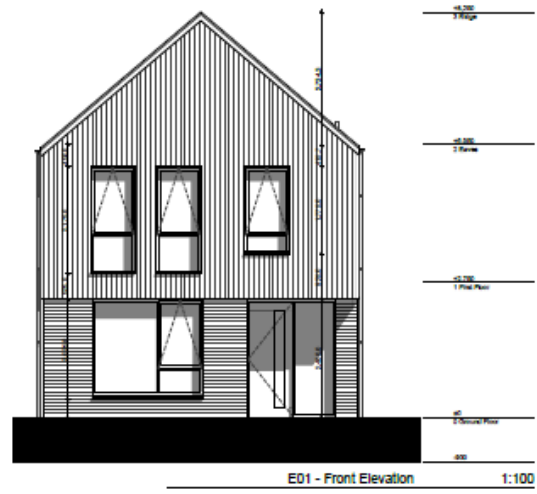
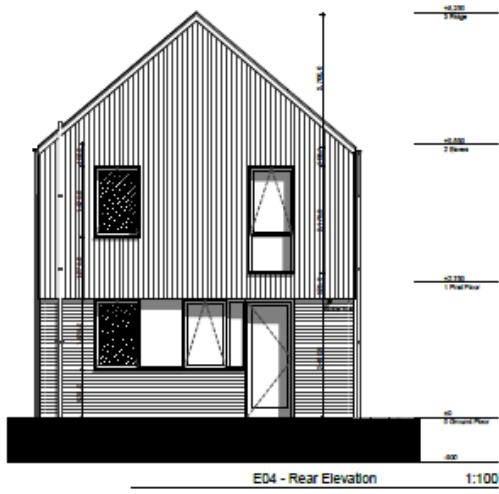
3D Renders



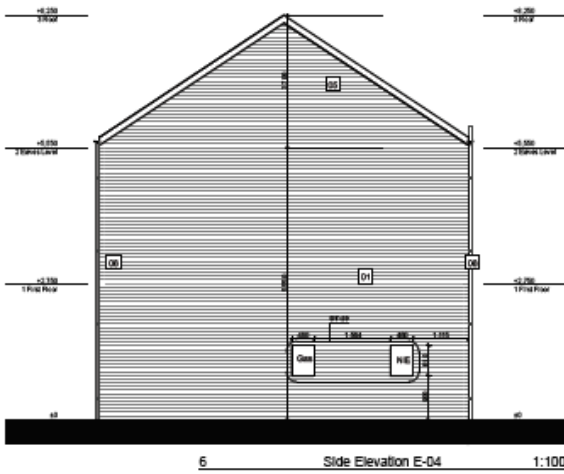
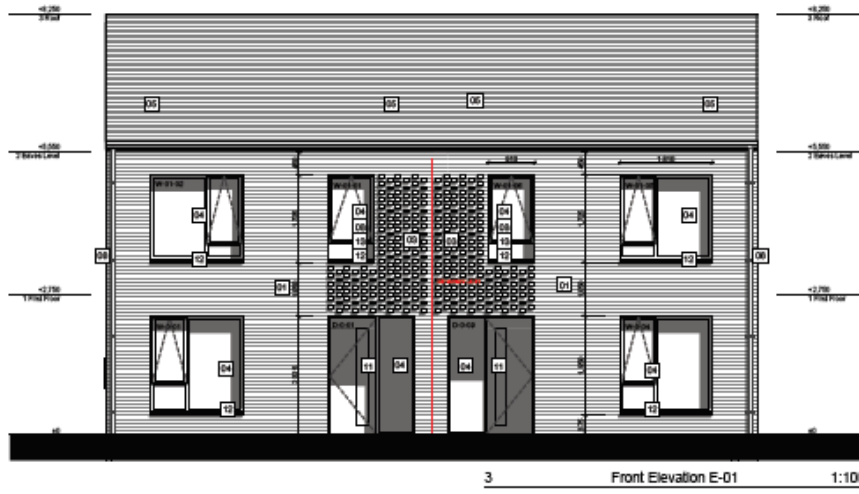
# 5p3b Affordable House Type

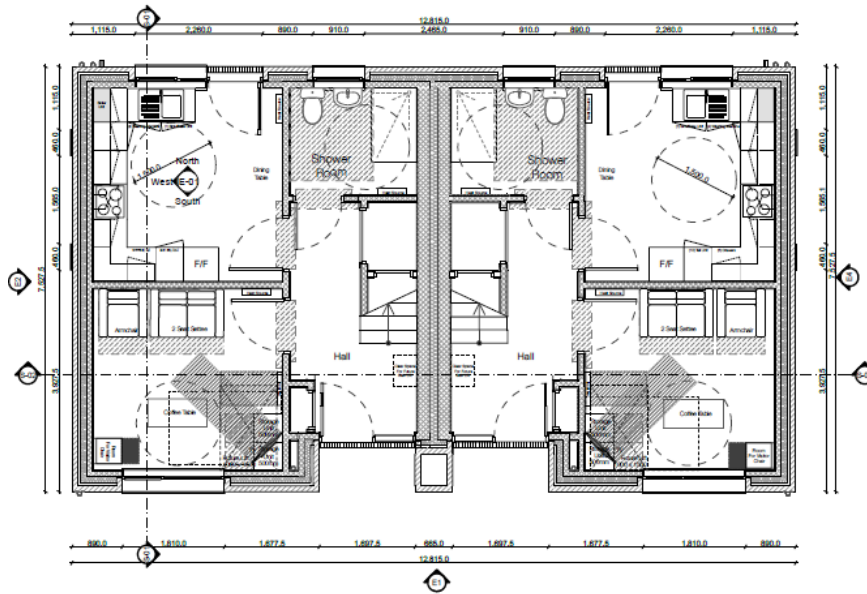


# 5p3b Social House Type

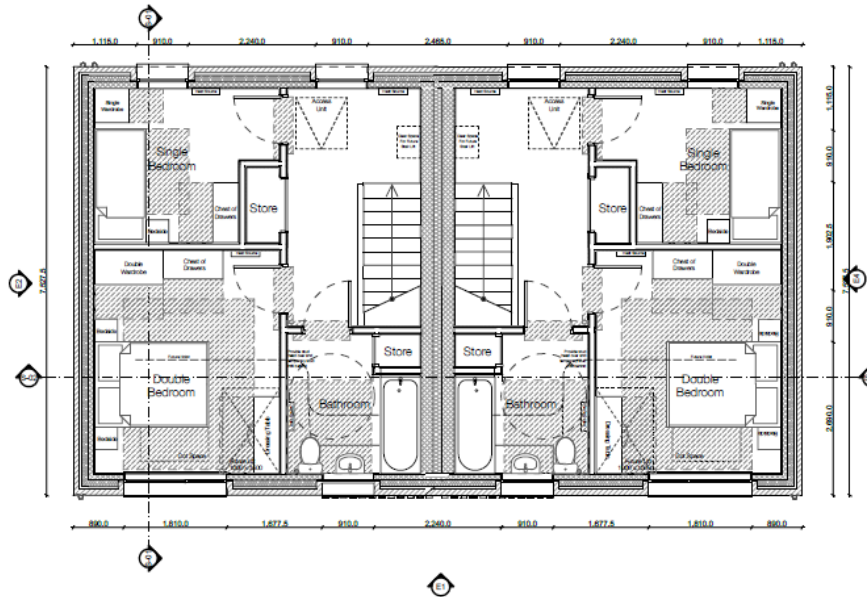


### 3p2b Social House Type





Ground Floor 1:100



First Floor 1:100

Hopefully this information has been helpful to you and as stated we would welcome your comments by emailing [matthew.doak@radiushousing.org](mailto:matthew.doak@radiushousing.org)

Thank you for your time.

Matthew Doak

Development Officer