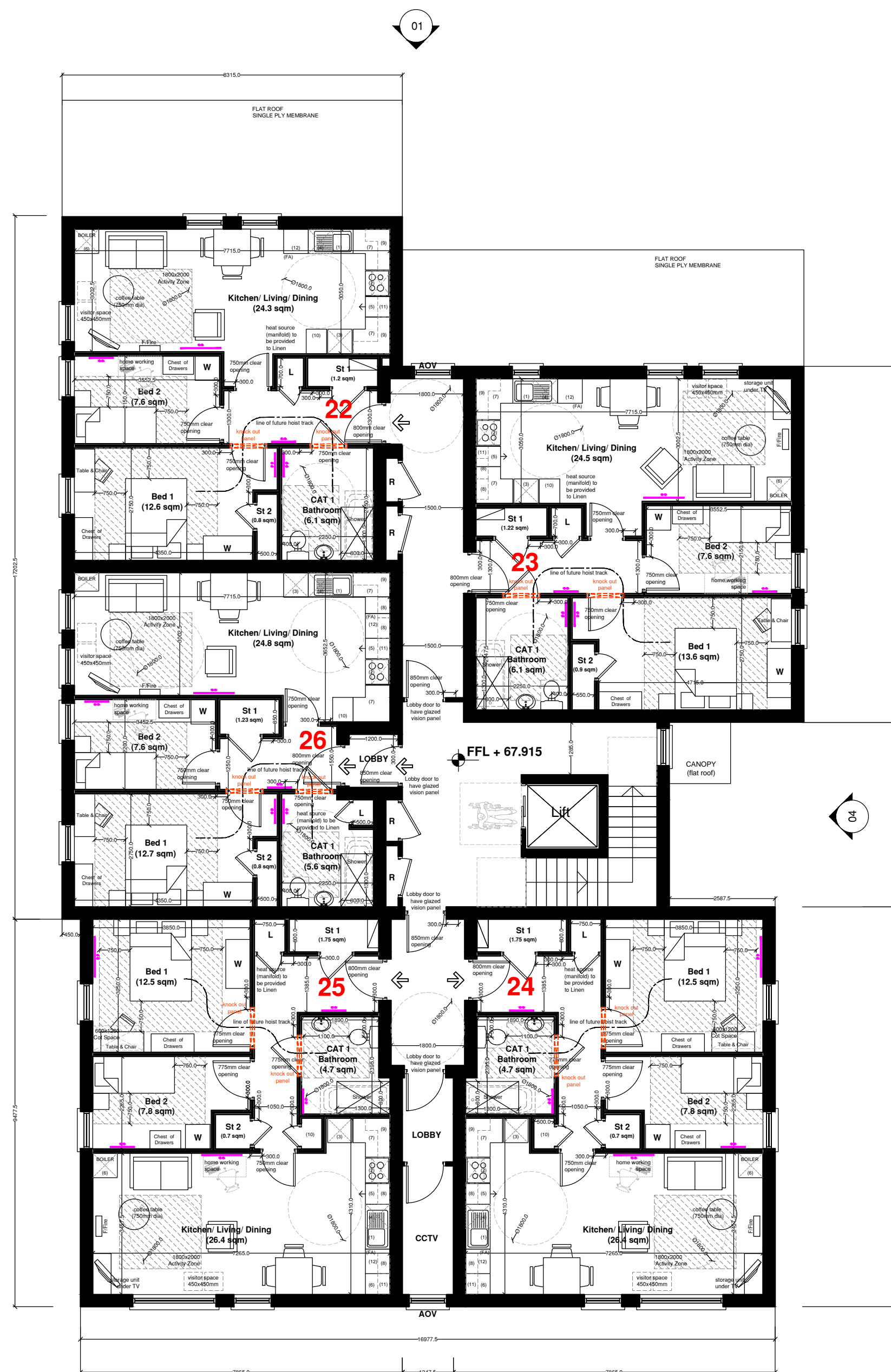


KITCHEN UNITS & APPLIANCE SPACES													NOTES		Storage		
Plots 23 & 28 - 3P/2B CAT 1 APARTMENT (AREA BAND = 60-65SQM) AREA = 62.5SQM													Total length of worktops incl sink & cooker	HA requirement: *** Additional corner unit (7) provided *** Additional base (8) unit under boiler unit provided in lieu of WM space under sink. Also note that additional functional 600mm base unit (12) provided which has option for future appliance to be fitted.	Store 01	1.2sqm	
(1)	(2)	(3)	(4)	(5)	(6)	(7)	(8)	(9)	(10)	(11)	(12)						
REQUIRED	1	1	1	1	1	1	2	1	1	1	1	1	2.5m	Total Required	2sqm	Total Provided	2.1sqm
Provided	1***	1	1	1	1	0**	2**	2	1	1	1*	1*	4m				

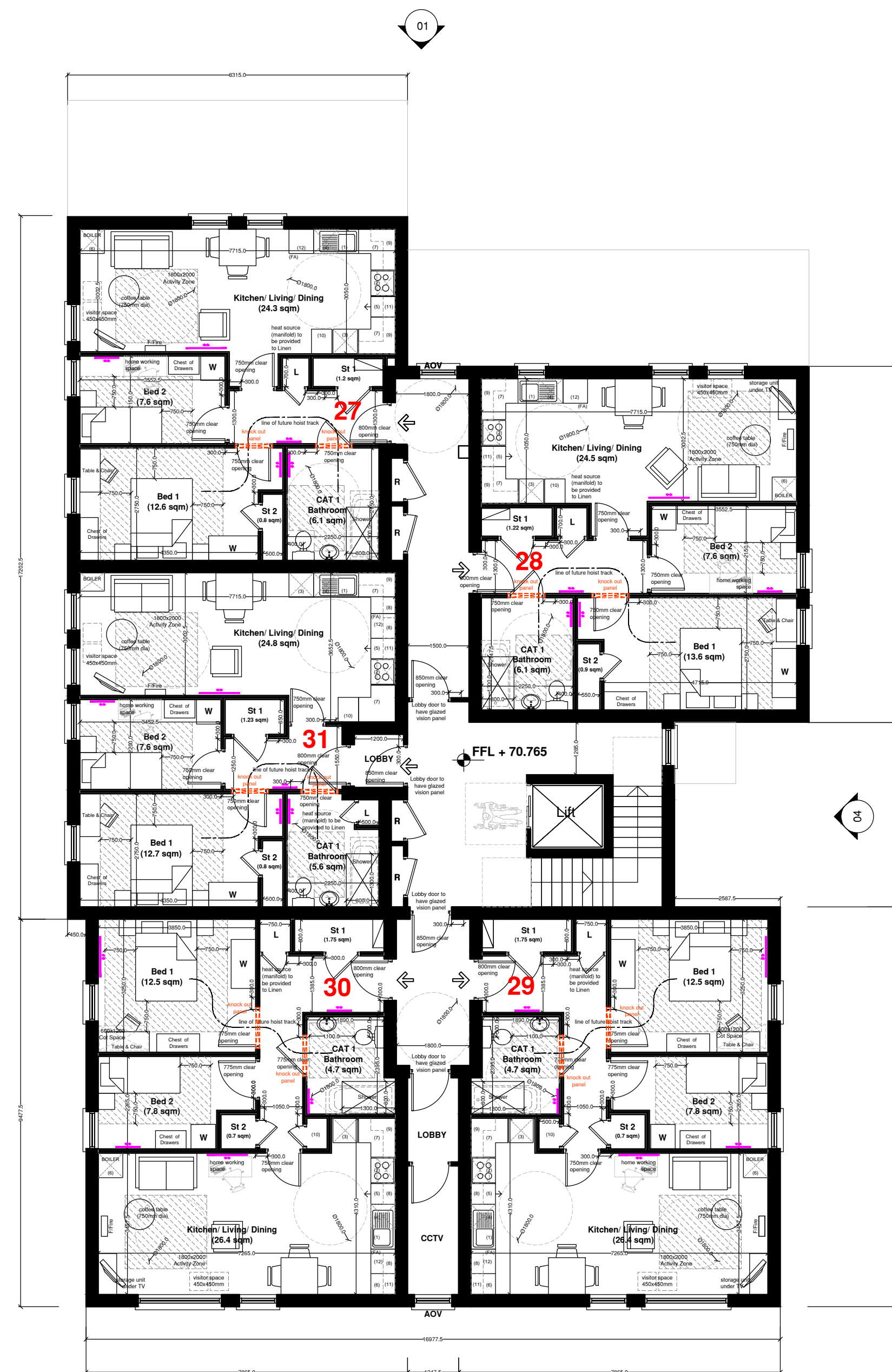
KITCHEN UNITS & APPLIANCE SPACES													NOTES		Storage		
Plots 22 & 27 - 3P/2B CAT 1 APARTMENT (AREA BAND = 60-65SQM) AREA = 61SQM													Total length of worktops incl sink & cooker	HA requirement: *** Additional corner unit (7) provided *** Additional base (8) unit under boiler unit provided in lieu of WM space under sink. Also note that additional functional 600mm base unit (12) provided which has option for future appliance to be fitted.	Store 01	1.2sqm	
(1)	(2)	(3)	(4)	(5)	(6)	(7)	(8)	(9)	(10)	(11)	(12)						
REQUIRED	1	1	1	1	1	1	2	1	1	1	1	1	2.5m	Total Required	2sqm	Total Provided	2sqm
Provided	1***	1	1	1	1	1	0**	2**	2	1	1	1*	4m				

KITCHEN UNITS & APPLIANCE SPACES													NOTES		Storage		
Plots 26 & 31 - 3P/2B CAT 1 APARTMENT (AREA BAND = 60-65SQM) AREA = 60SQM													Total length of worktops incl sink & cooker	HA requirement: *** Provided as a corner base unit *** Additional corner base (7) unit provided in lieu of WM space under sink & base unit (8). Also note that additional functional 600mm base unit (12) provided which has option for future appliance to be fitted.	Store 01	1.2sqm	
(1)	(2)	(3)	(4)	(5)	(6)	(7)	(8)	(9)	(10)	(11)	(12)						
REQUIRED	1	1	1	1	1	1	1	1	1	2	1	1	2.5m	Total Required	2sqm	Total Provided	2.0sqm
Provided	1***	1	1	1	1	1	0**	1**	2	1	1	1*	4.1m				

KITCHEN UNITS & APPLIANCE SPACES													NOTES		Storage		
Plots 24, 25, 29 & 30 - 3P/2B CAT 1 APARTMENT (AREA BAND = 60-65SQM) AREA = 65SQM													Total length of worktops incl sink & cooker	HA requirement: *** Provided as a corner base unit *** Additional base (8) unit under boiler unit provided in lieu of WM space under sink. Also note that additional functional 600mm base unit (12) provided which has option for future appliance to be fitted. **** Provided in dedicated store	Store 01	1.7sqm	
(1)	(2)	(3)	(4)	(5)	(6)	(7)	(8)	(9)	(10)	(11)	(12)						
REQUIRED	1	1	1	1	1	1	1	2	1	1	1	1	2.5m	Total Required	2sqm	Total Provided	2.4sqm
Provided	1***	1	1	1	1	1	1	1**	2	1	1****	1*	4m				



1ST PLAN



2ND PLAN

NOTES

BLOCK B - Schedule of Accommodation

Apt No.	Type	HAG (sqm)	Area (sqm)
18	3p/2b	60-65	62.7
19	3p/2b	60-65	62.5
20	3p/2b	60-65	65
21	3p/2b	60-65	65
22	3p/2b	60-65	61
23	3p/2b	60-65	62.5
24	3p/2b	60-65	65
25	3p/2b	60-65	65
26	3p/2b	60-65	60
27	3p/2b	60-65	61
28	3p/2b	60-65	62.5
29	3p/2b	60-65	65
30	3p/2b	60-65	65
31	3p/2b	60-65	60
32	3p/2b	60-65	61
33	3p/2b	60-65	62.5
34	3p/2b	60-65	60

REVISIONS

REV.	DESCRIPTION	BY DATE	CHK DATE

PROJECT
733 - 735 ANTRIM ROAD BELFAST

JOB No. 2325 WORKSTAGE 1-3 DRAWING No. 106 REVISION

CLIENT
S4S DEVELOPMENTS LTD

DRAWING TITLE
BLOCK B
PROPOSED FIRST & SECOND FLOOR
PLANS
DPG FUNDING DRAWING

SCALE 1:100 DATE JAN/25 DRAWN PT CHECKED PT

BOYD
THE BOYD PARTNERSHIP
CHARTERED ARCHITECTS LLP
TEL: 033 2046 5144